

Southwest Nordic Center
PO Box 3212
Taos, NM 87571
(575) 758-4761
yurt@newmex.com

Overnight What to Bring List

Skis, boots, and poles
Waxes or Maxiglide
Backpack- preferably an internal frame
Sleeping Bag- as warm as you have
Warm Hat- one that covers your ears
Mittens and/or Gloves- mittens are warmer
Wool Socks
Sock Liners- silk or polypropylene
Scarf
Long Underwear- both top and bottoms
Pants or Knickers- No jeans. Wool, thinsulate, pile, or
polypropylene are fine
Shirt
Sweater
Vest
Jacket- insulated
Windshell- both top and bottom
Gaiters
Sunglasses
Sunblock
Day Pack
Map and Compass
First Aid Kit
Ski Repair Kit
Climbing Skins
Food
Water
Camera and Film
Booties or Hut Slippers
Head lamp or flashlight
Toilet Paper
Toothbrush and Paste
Soap- biodegradable only
Shovel at the vehicle in case you need to dig out

The way to dress for cross-country skiing is to wear layers. This will enable you to stay warm without getting too hot or cold. The above list takes this into account. The list is complete as to required items and includes some personal items also. You are welcome to bring other items as you choose. Remember: Even if the weather is sunny in town or at the trailhead you should still bring plenty of warm clothes.

What is at the Yurt

This list is intended to serve as a reference for what you can expect to find at the yurt. It does not represent an inventory of items but rather as assistance to guide your preparations.

Kitchen:

The yurt comes equipped with a three-burner propane cook stove. There is a propane tank at the yurt. There is not an oven at the yurt. There are pots and pans, silverware, utensils, measuring cups and spoons, water glasses, coffee cups, wine glasses, melitta coffee filters and cone, thermos, hot pads, kitchen towels, paper towels, garbage bags, dish soap, scrubbies, spices, salt and pepper.

Lighting:

The yurt comes with two propane lanterns that operate with disposable propane canisters, which are provided. A spare lantern, globe, and mantles are provided as well.

Sleeping:

The yurt is set up to accommodate up to 6 persons. The arrangement is two bunk beds with two mattresses on each with two extra mattresses, which can be put on the floor when needed. There are 6 pillows/cases provided.

Warmth:

The yurt comes equipped with an airtight woodstove, with a glass window for ambiance. Firewood is provided. There is newspaper and matches provided as well for fire starting. There are two throw rugs available to assist with comfort and ambiance. Sleeping bags and blankets are not provided.

Toilet:

There is an outhouse for going to the bathroom. The toilet seat resides in the yurt so as to keep it warm for when needed. Toilet paper is provided. There is lime in the outhouse for spreading when finished.

Water:

Water is by snowmelt. There are 2 large pots, which live on the woodstove for melting snow for cooking, drinking, and doing dishes. There are other large pots for collecting snow. It is recommended that all drinking water be boiled. It is easy to cool down by putting covered pots outside.

Games:

There are some games provided at the yurt. It is attempted to have cards, cribbage, Jenga, Yahtzee, chess, checkers, and backgammon. Every season is rough on the game boxes but the contents should be there.

Table:

There is a table and benches for eating and hanging around. The benches are not padded.

Accessories:

There is a broom, mop and bucket, hatchet, axe, maul, snow shovel, and digging shovel. These will help with managing the snow around the yurt and keeping the yurt tidy inside.

The Southwest Nordic Center welcomes you to our yurt system. Great effort has gone into making our yurts warm and comfortable for your stay. Below are a number of items that will require your attention. Please follow the recommendations for handling of wastes so as to keep the environment safe for groups that will follow (it's worth the extra effort). Please be careful with fire at the yurts and enjoy your stay.

Yurt Maintenance-

Arriving- please use the shovel and/or broom to clear any snow off the deck and stairs. Take care not to dig into the deck when chipping ice. You will want to clear a path to the outhouse, and then clear any snow from its roof. A decent path to the outhouse will make using it easier. You will also want to clear as much snow as possible from the roof of the yurt, especially over the door so as to assure its free movement. Please be careful not to tear the roof in the process.

Water- supply is by snowmelt, so **No Dogs** at the yurt. Snow may be collected anywhere in the vicinity of the yurt. Care should be taken to select only clean, pure snow. The snow may be melted in the large pot on the wood stove. Take care not to burn the snow when melting or there will be an off taste to the water. It is recommended to boil water to purify it.

Warmth- an airtight wood stove has been installed for your comfort. Remove excess ashes from the stove before starting a fire. A metal container is kept behind the stove for this purpose. Empty the ashes into the outhouse hole. Paper is provided and kindling may be chopped on a stump on the deck. When stoking the fire, first rake the coals to the front of the stove before adding more wood. Do not leave the stove door open during burning and whenever you leave the yurt be sure that the stove is turned down completely. The damper is opened by pulling the gold knob out from the wood stove. Split wood to be burned is stacked inside next to the wood stove and on a wood deck to the south of the yurt deck. It helps to dry the wood out inside the yurt prior to needing it. If moisture persists then utilize smaller pieces in the stove.

Cooking- the gas cook stove uses propane. To use the gas cook stove you must first turn on the valve on the propane tank on the deck. Please do not overturn this valve! Next turn on the valve located where the hose attaches to the stove's regulator inside the yurt. Please close the inside valve whenever the cook stove is not in use for extended periods i.e. overnight and during the day. Turn off both valves when you finish your visit. If you encounter an unsolvable problem with the cook stove there is a back-up two burner stove in the Yurt Maintenance box underneath the bunk opposite the kitchen. This stove uses the same propane cans as the lanterns. Put a hot pad under hot pots and pans when setting them on wood surfaces.

Lighting- there are two propane lanterns provided. They use disposable canisters. Extras of these can be found under the bunk adjacent to the kitchen. Always light the match before turning on the gas when lighting the lanterns. The lantern handles get hot when the lanterns are hanging and burning, so use a hot pad when moving them. Be careful not to knock over the lanterns! A spare lantern is available in the Yurt Maintenance box under the bunk opposite the kitchen counter. A spare globe and mantles may be found in a plastic container to the left of the kitchen counter.

Yurt Maintenance, page 2

Dishes- there are two 5-gallon stainless steel pots for melting snow to wash dishes. Cleaning is with a 3-bucket system utilizing the 3 bus tubs that are provided. Tub #1 gets soap, but very little as the cold dish soap will foam much more than expected! Tub #2 is for the first rinse. Tub #3 is for the final rinse and sanitizing as it gets a touch of bleach (1 tbl/gallon H₂O). Discard of the dishwater into the outhouse hole.

Urination- please do not pee off of the deck, or in random areas around the yurt! Either use the outhouse or on the far side of the outhouse beyond the path.

Garbage- garbage bags and a trash can are provided, but each group is expected to carry out their own garbage. Be sure to check the trash can before you go! Leaving a clean bag in the can is fine if it is empty.

Food- plastic containers for storing food during your stay are provided, adjacent to the kitchen counter, so as to discourage rodents. Items that need to be kept cold can be stored in a separate container and stored on the floor away from the woodstove or outside (beware of freezing). These plastic containers may have spare food and yurt supplies already, but there should be plenty of room for your food. Feel free to leave left over food for later groups, however do not leave perishables as these simply rot.

Yurt Safety- at each yurt follow the instructions printed on each appliance for safe operation. Operation manuals for the wood stove, gas cook stove, and lanterns may be found in a plastic container to the left of the kitchen counter. Please do not set candles directly on wood surfaces. Instead put them in a container to catch dripping wax and prevent toppling. There is a fire extinguisher attached to the end of the bunk adjacent to the kitchen counter. A first aid kit and maps may be found to the left of the kitchen counter in one of the plastic containers.

Leaving- check out time is 1 PM. You may stay later if the next group has not arrived yet, but the yurt should be ready for their arrival. Please leave the yurt as you found it: fresh piles of dry wood and kindling inside with the floor swept and dishes clean.

Safety-

The yurts are in the mountain backcountry. Travel in such a remote area can be hazardous. If you are using the yurts on an unguided basis you are responsible for your own safety. Every group should be prepared for any emergency that may arise. Ski repair and first aid kits should be carried (lists available upon request). Skill with map and compass is required. Those wishing to ski steeper terrain should be aware of avalanche dangers. If you are in doubt about a slope's stability then don't ski it! In the event of an emergency call SNC at (575) 758-4761, and for a rescue call the Conejos County Sheriff at (719) 376-5921.

Yurt(s) to be visited _____

Date of Tour _____

Southwest Nordic Center
PO Box 3212
Taos, NM 87571
e-mail: yurt@newmex.com
(575) 758-4761

Visitor's Acknowledgment of Risk

I recognize that there is an element of risk in any adventure, sport, or activity associated with the outdoors. I am fully cognizant of the risks and dangers inherent in cross-country skiing. Knowing of the inherent risks, dangers, and rigors required of said activity, I certify that me and my family, including minor children, are fully capable of participating in the said activity. Therefore, I assume full responsibility for personal injury to myself and/or to members of my family, or for loss or damage to my personal property and expenses thereof as a result of my negligence or the negligence of my family participating in said activity except to the extent such damage or injury may be due to the negligence of the Southwest Nordic Center. I further understand that the Southwest Nordic Center reserves the right to refuse any person it judges to be incapable of meeting the rigors and requirements of participating in cross-country skiing.

I realize that Colorado Highway 17, the highway to the yurt trailheads, can be snow covered and icy and that it is highly recommended that I bring chains, snow tires, and/or a four wheel drive vehicle. I know that the weather at the yurts can be inclement and that the Southwest Nordic Center does not guarantee the weather in any way, shape, or form. I further understand that the Southwest Nordic Center does not guarantee the snow quantity or quality on the date of my yurt tour. I realize that the yurts are in the mountain backcountry. I know that routefinding in inclement weather can be very difficult. I also know that tours to the yurts are offered on a guided basis. Therefore, if I am not hiring a guide, then I accept full responsibility for finding the route to any of the yurts.

Name of Participant:

Self-_____

Address-_____

E-mail-_____

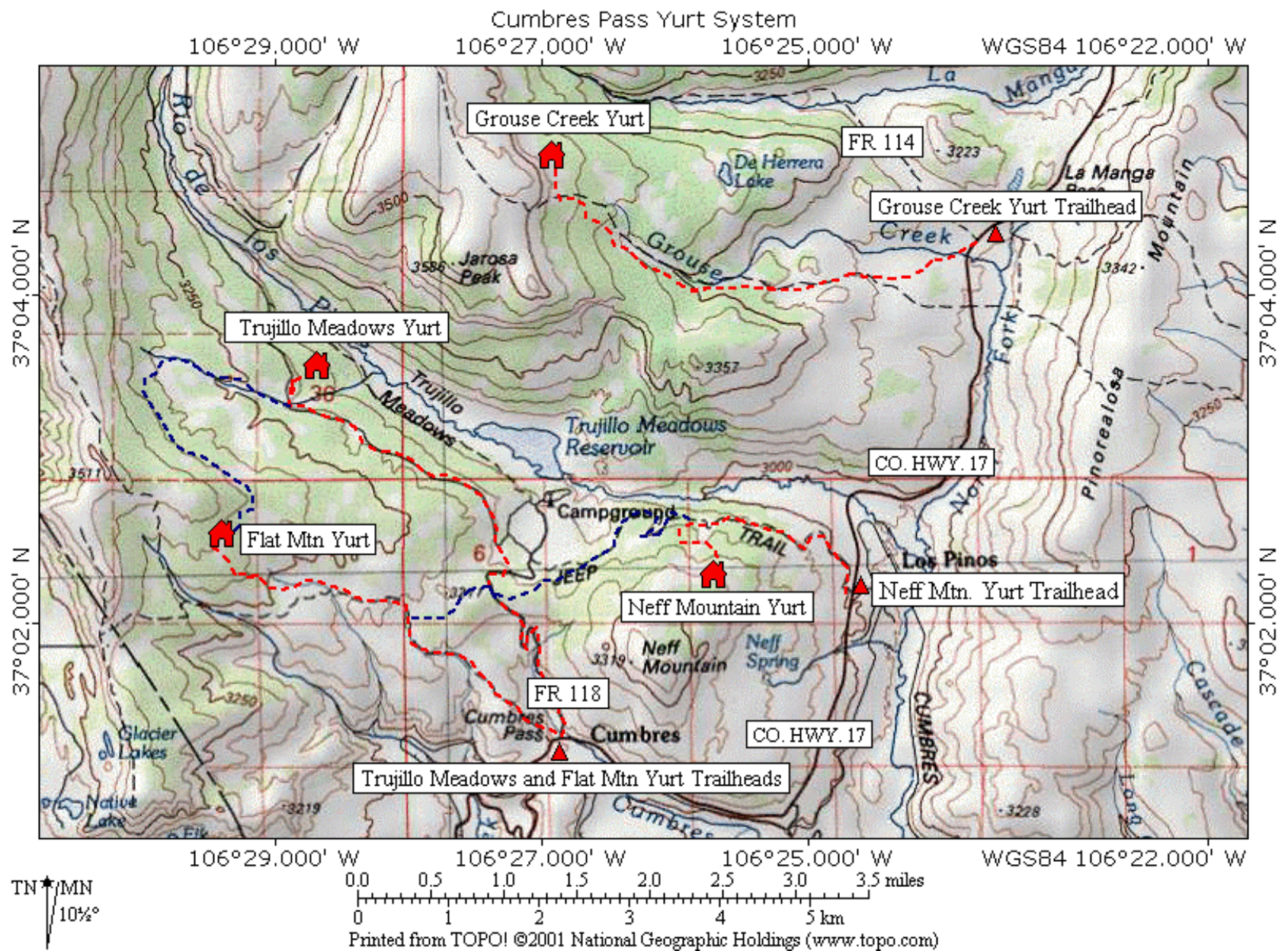
Phone-_____

I have read, understand, and accept the terms and conditions stated herein and acknowledge that this agreement shall be effective and binding upon the parties during the entire period of participation in said activity.

Customer Signature_____

Date_____

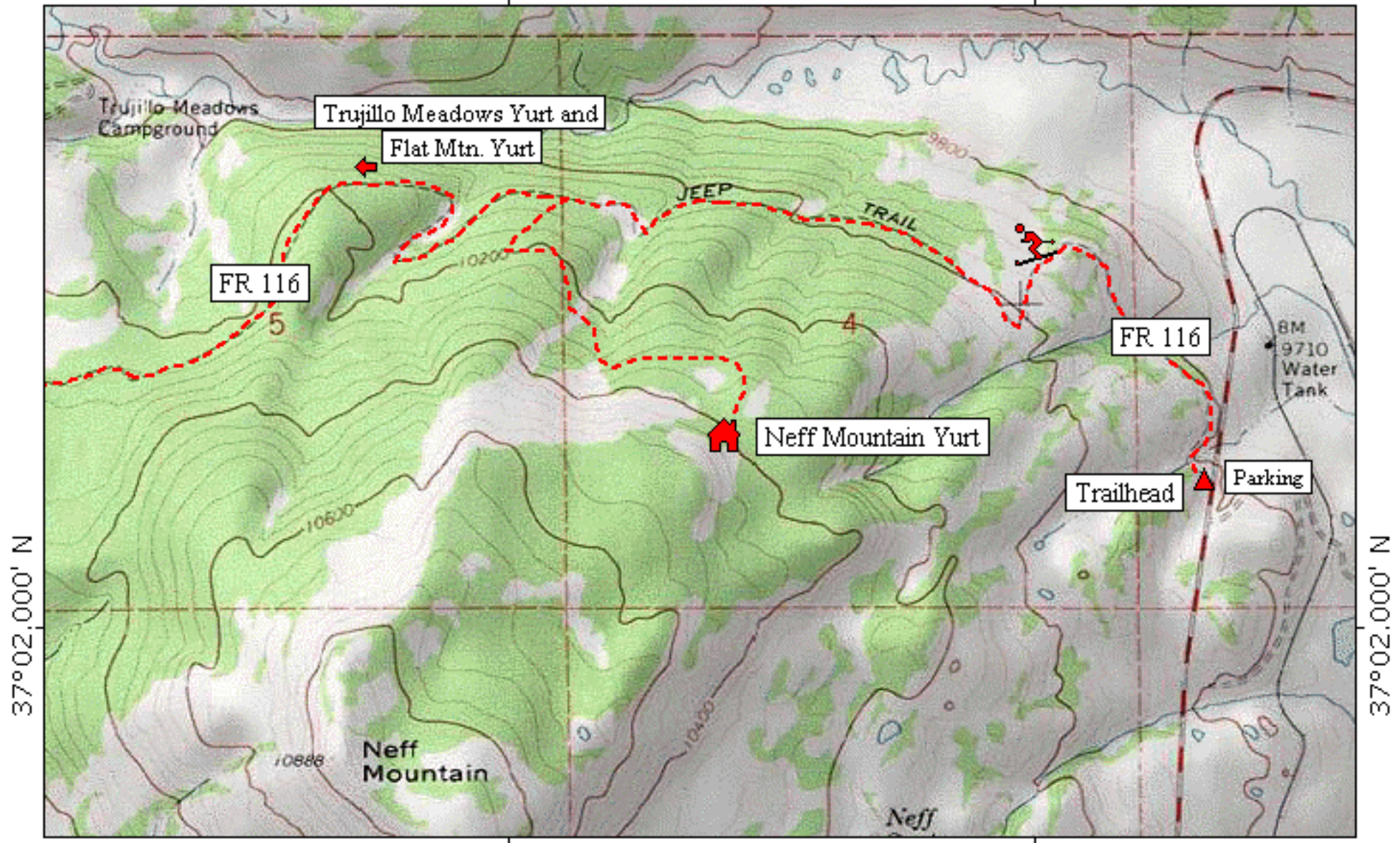
_____ Please do not include me on your e-mailing list



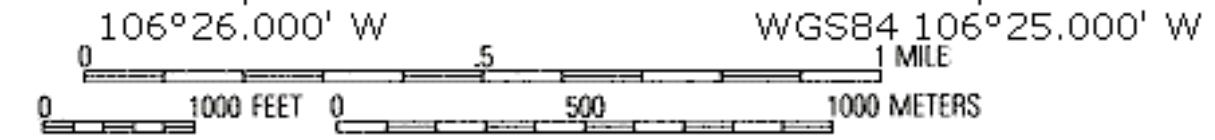
Roads to the Yurts



Neff Mountain Yurt Map
106°26.000' W WGS84 106°25.000' W



TN * MN
10 1/2°



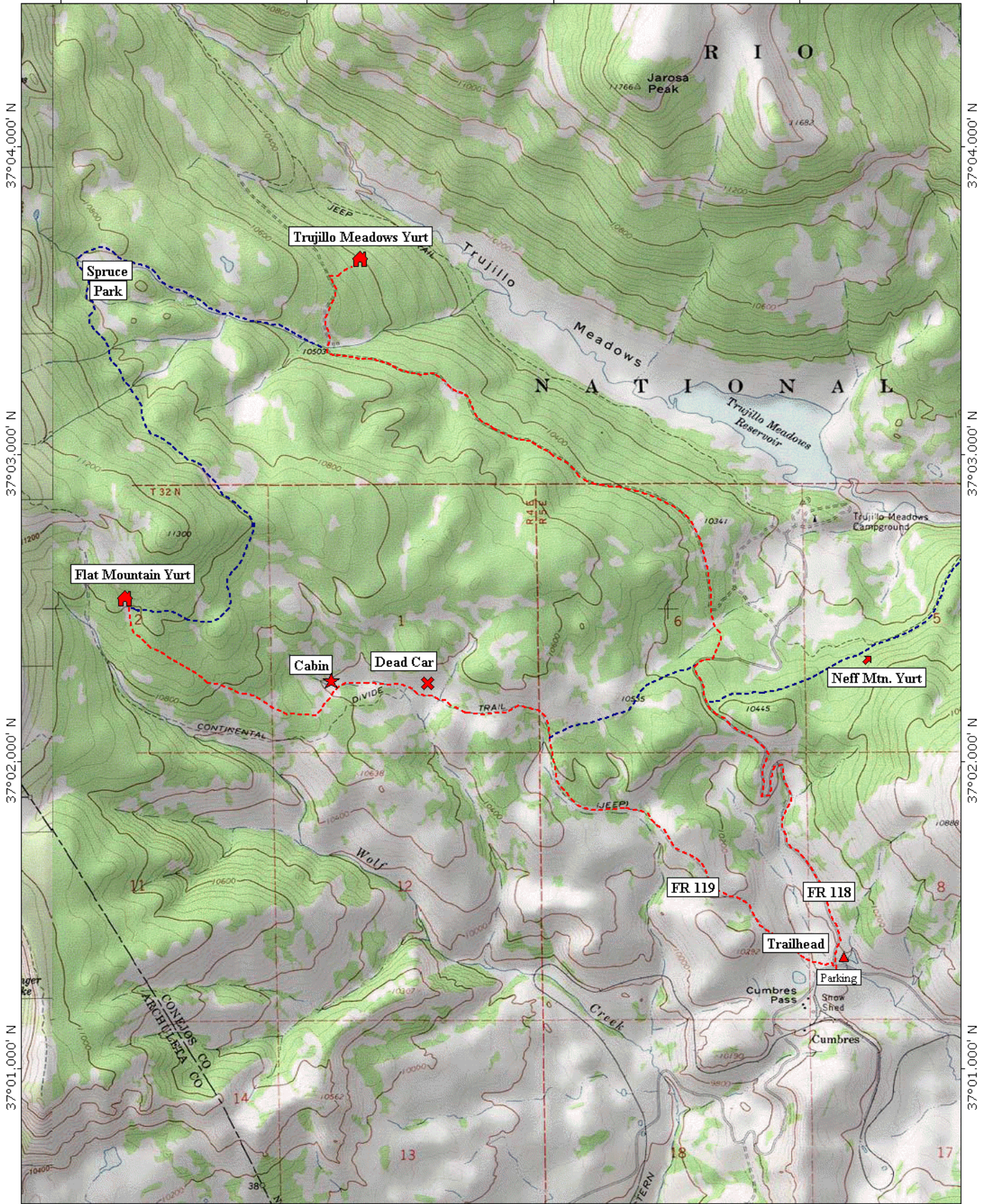
Trujillo Meadows and Flat Mountain Yurts

106°30.000' W

106°29.000' W

106°28.000' W

WGS84 106°27.000' W



37°04.000' N

37°04.000' N

37°03.000' N

37°03.000' N

37°02.000' N

37°02.000' N

37°01.000' N

37°01.000' N

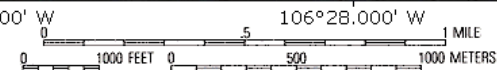
106°30.000' W

106°29.000' W

106°28.000' W

WGS84 106°27.000' W

TN
MN
10 1/2°



Printed from TOPO! ©2001 National Geographic Holdings (www.topo.com)

Neff Mountain Yurt-

Trailhead: On Colorado 17, 3.6 miles north of Cumbres Pass or 3.8 miles south of La Manga Pass, at the junction with FR 116, the Neff Mountain Road.

Trailhead GPS: 37 02.303N; 106 24.662

Parking: Excellent parking on the east side of Colorado 17.

Trailhead Elevation: 9,800'

Yurt Elevation: 10,400'

Yurt GPS: 37 02 319N; 106 25 583W

Mileage to the Yurt: 2.75

Maps: Cumbres Pass, CO 7.5 min. USGS quad
Rio Grande National Forest

Directions to the Neff Mountain Yurt- The trailhead for this yurt lies on Co. Highway 17, 3.6 miles north of Cumbres Pass, on the west side of the road. Parking is directly across the highway. After skiing 50 yards, one enters the woods where the first blue diamond blaze can be seen. The trail follows FR 116, the Neff Mtn. Road, for 1.9 miles, at which point you ski up to the left on an old logging road. Be sure to look for the blazes at this intersection. The blue blazes go to the left and continue on to Neff Mtn. Yurt. The yellow blazes continue along the rest of FR 116 marking the route between yurts. From this intersection the Neff Mtn. Yurt trail follows the new road for about a mile where it comes out of the woods into a more open rolling meadow area. The yurt lies about 250 yards directly in front of you at this point (south) but remains out of sight. Continue along the road to the left of the clump of trees in front of you then leave the road to head south following the blazes to the yurt.

Directions to Neff Mountain Yurt from Cumbres Pass- The trailhead is on Co. Highway 17 at Cumbres Pass. One begins at the pullout for Trujillo Meadows Reservoir, FR 118. The trail heads NNW up the right hand side of the meadow following FR 118. There will not be many markers until you enter the trees near the far end of the meadow. The color of the blazes, for this trail, is blue. At 1.4 miles along FR 118 you will reach FR 116, Neff Mtn. Road, on your right. Turn right onto this road. This trail is marked with yellow markers and yellow marking tape. You will follow this road for 2.3 miles until you intersect the right turn up to the Neff Mtn Yurt. If you were to continue straight on FR 116 you will soon see blue markers. Soon after the uphill right turn from FR 116 there is a forest service gate. It may be covered in snow when the base is 4' and above. This route is marked with blue markers. From this intersection the Neff Mtn. Yurt trail follows the new road for about a mile where it comes out of the woods into a more open rolling meadow area. The yurt lies about 250 yards directly in front of you at this point (south) but remains out of sight. Continue along the road to the left of the clump of trees in front of you then leave the road to head south following the blazes to the yurt.

Directions from Neff Mtn Yurt to Flat Mtn Yurt- Ski north from the yurt following the blue blazes until you locate the forest road that leaves the open meadow area and heads back below the Neff Mountain Bowl. Follow this well marked route back to FR 116. Turn left at this intersection and begin following the yellow markers and tape. You will ski along FR 116 2.3 miles until intersecting FR 118. Turn right onto FR 118.

You will be on this road for .2 miles. Look for the yellow markers on the left that take you onto a new forest road. Follow this road and yellow markers for roughly ¾ mile until the tee intersection with the Flat Mtn Yurt trail (GPS: N 37 02.087; W 106 28.014). Turn up to the right following the blue/orange markers. In about ½ mile you will come to a large open meadow area. You will want to pay particular attention here as there is little to place markers on. You ski WNW across the meadow passing just above the large metal gateway. Just beyond this is an old abandoned car (if it's not buried) (GPS: N 37 02.239; W 106 28.582). Continue straight past the gateway at the same elevation. Look for orange/blue markers hanging on the trees to lead you into more open meadow. You will ski below a cabin staying to the left following the orange/blue markers, which will now lead you to the SSW. The trail will reenter the woods and continue in a WNW direction to the yurt. The rest of the route should be easy to follow if you keep an eye out for the orange/blue trail markers. About a quarter mile before the yurt you will ski below a second cabin. Continue straight and about 1/10th of a mile further there will be a right turn up the hill which leads to an open meadow. The yurt is at the far end of the meadow tucked into the trees.

Flat Mountain Yurt-

Trailhead: On Colorado 17, .2 miles north of Cumbres Pass or 7.2 miles south of La Manga Pass, at the junction with FR 118, the Trujillo Meadows Reservoir Road.

Parking: Excellent parking on the west side of Colorado 17 at the pull out for FR 118, or on the east side just south of this pull out.

Trailhead Elevation: 10, 022

Trailhead GPS: 37 01.304N; 106 26.810W

Yurt Elevation: 11,100'

Yurt GPS: 37 02 607N; 106 29 846W

Mileage to the Yurt: 4.5 miles

Maps: Cumbres Pass, CO 7.5 min. USGS quad; Archuleta Creek, CO 7.5 min. USGS; Rio Grande National Forest

Directions from Flat Mtn Yurt to the Trailhead- Ski east and down across the open meadow in front of the yurt following the orange/blue markers. You will follow a forest road about one mile then look for the markers to turn left into a long meadow. You will ski below a cabin then veer right through some trees into another open meadow which has a fence and then the "dead car" (GPS: N 37 02.239; W 106 28.582). Continue past the dead car and gateway and look for the markers to enter the trees on your right. Here you will join a forest road which leads into another open meadow. Ski east across this meadow looking for the orange/blue markers on the trees. This will lead you into another open meadow which you ski across and follow the trail as it descends to the intersection with the yurt to yurt trail to Neff Mountain Yurt (GPS: N 37 02.087; W 106 28.014), which will be marked with yellow markers. You stay to the right and continue descending following the orange/blue markers. The last one and a half miles is well marked leading to Co. Hwy. 17.